

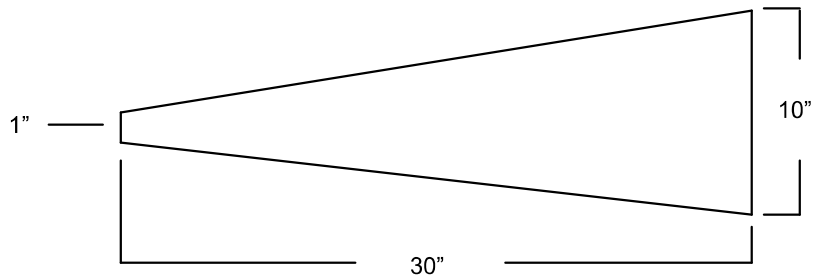


Synthetic Cover Up Material

If you are laminating a carbon socket and want to use a custom print laminating sleeve, then you will need this Synthetic Cover Up Material. The unique properties of the SCM material allow total cover up of all underlying carbon structures with only a single sheer layer! The dynamic elongation properties of this material allow it to fit the largest range of sizes possible from a single sleeve.

Will accommodate sizes:

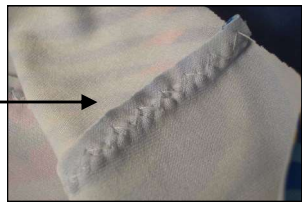
1" inch diameter to 45" inches in diameter



Features:

- Zigzag Seam.
- 4 - Way super stretch.
- One size fits all.

Zigzag seam



Item:	Description:
SCM-100	30" x 10" x 1"



Get the most out of your colors!